



6 Vintage View Port Macquarie, NSW



4



2



2

## Contemporary Living with Private Garden Outlook & Area Views

Those who appreciate quality will love this contemporary build where executive comforts are evident throughout.

A fabulous floor plan transitions from in to outdoors and showcases a design incorporating three living areas plus covered alfresco.

The lounge/media is a cosy retreat, while family living opens widely onto the entertainer's patio. The chic kitchen is appointed with gas benchtop cooking, dishwasher and fabulous pantry storage. Feature tiling adds panache to a work hub capturing garden views.

Located within minutes' drive of schools, childcare, university, shopping and hospital pre...

**Price:** Guide \$830,000-\$870,000

**Council Rates:** \$2,800.00/year (approx)

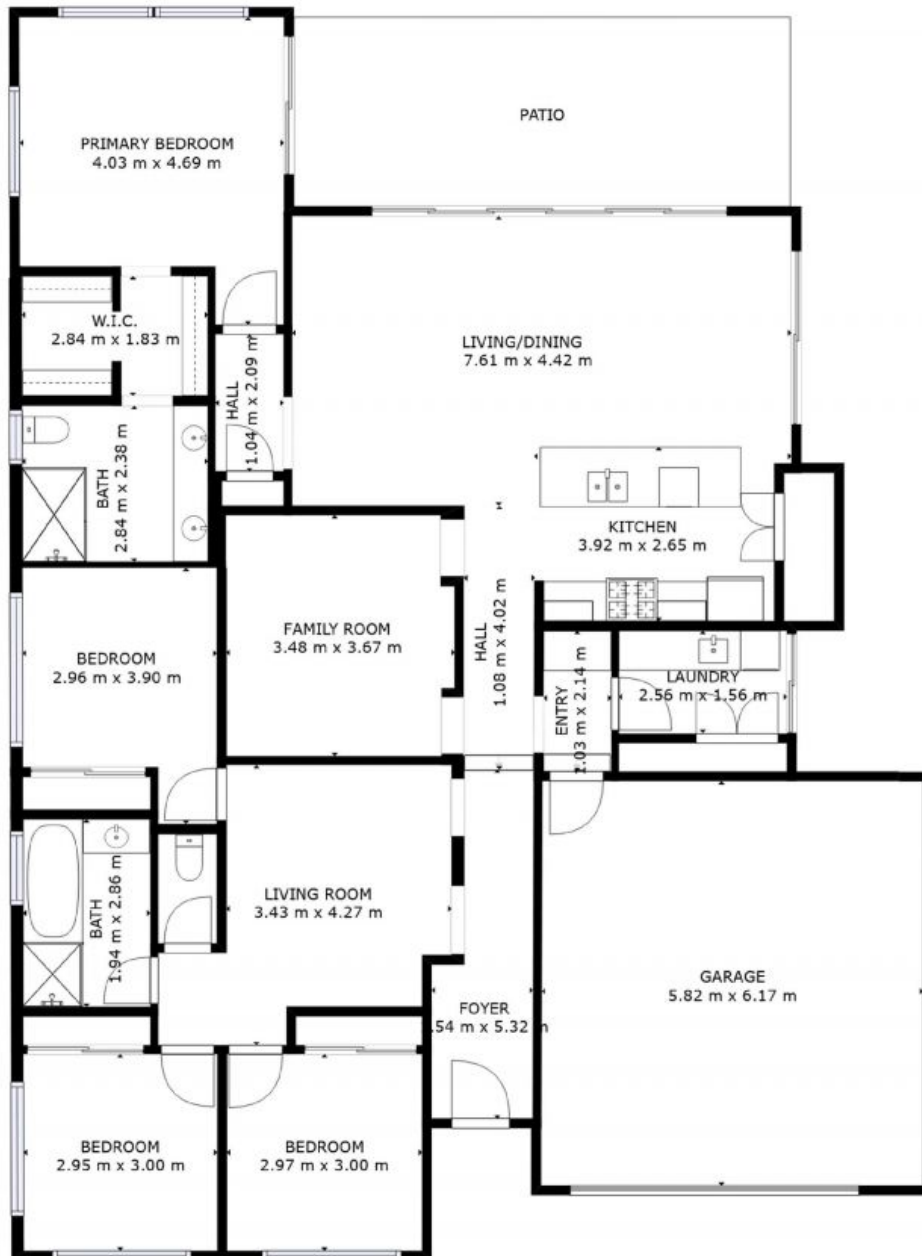
**PERCIVAL**  
PROPERTY

**Michelle Percival**

0404 466 500

**Glenn Scott**

0417 019 756



GROSS INTERNAL AREA  
FLOOR 1: 166 m<sup>2</sup>, EXCLUDED AREAS:  
GARAGE: 36 m<sup>2</sup>, PATIO: 22 m<sup>2</sup>  
TOTAL: 166 m<sup>2</sup>

SIZES AND DIMENSIONS ARE APPROXIMATE, ACTUAL MAY VARY.

## 6 Vintage View, Port Macquarie