



12a or 12b Gunsynd Chase Port Macquarie, NSW

3 2 2

"Gunsynd Heights"- Two Architecturally Designed 3BR Luxury Villas

Located just 10 minutes from Port Macquarie's CBD and beachfront, "Gunsynd Heights" is inspired by the prestigious grey champion racehorse "Gunsynd", with each villa showcasing it's own winning combination of textural grey and white organic materials.

Built to the highest standard and with a focus on sustainability, the contemporary facades feature durable rendered brick. Feature horizontal grey cladding is complemented by a merbau timber and glass front door and striking matte black finishes. A Panelift double garage provides secure access to indoors.

Individually designed with a well thought floor plan, each villa includes three light filled bedrooms, state-of-the-art ensuite in the master bedroom, deluxe main bathroom with freestanding bathtub, cutting edge luxury stone island kitchen with marble and glass pendant ...

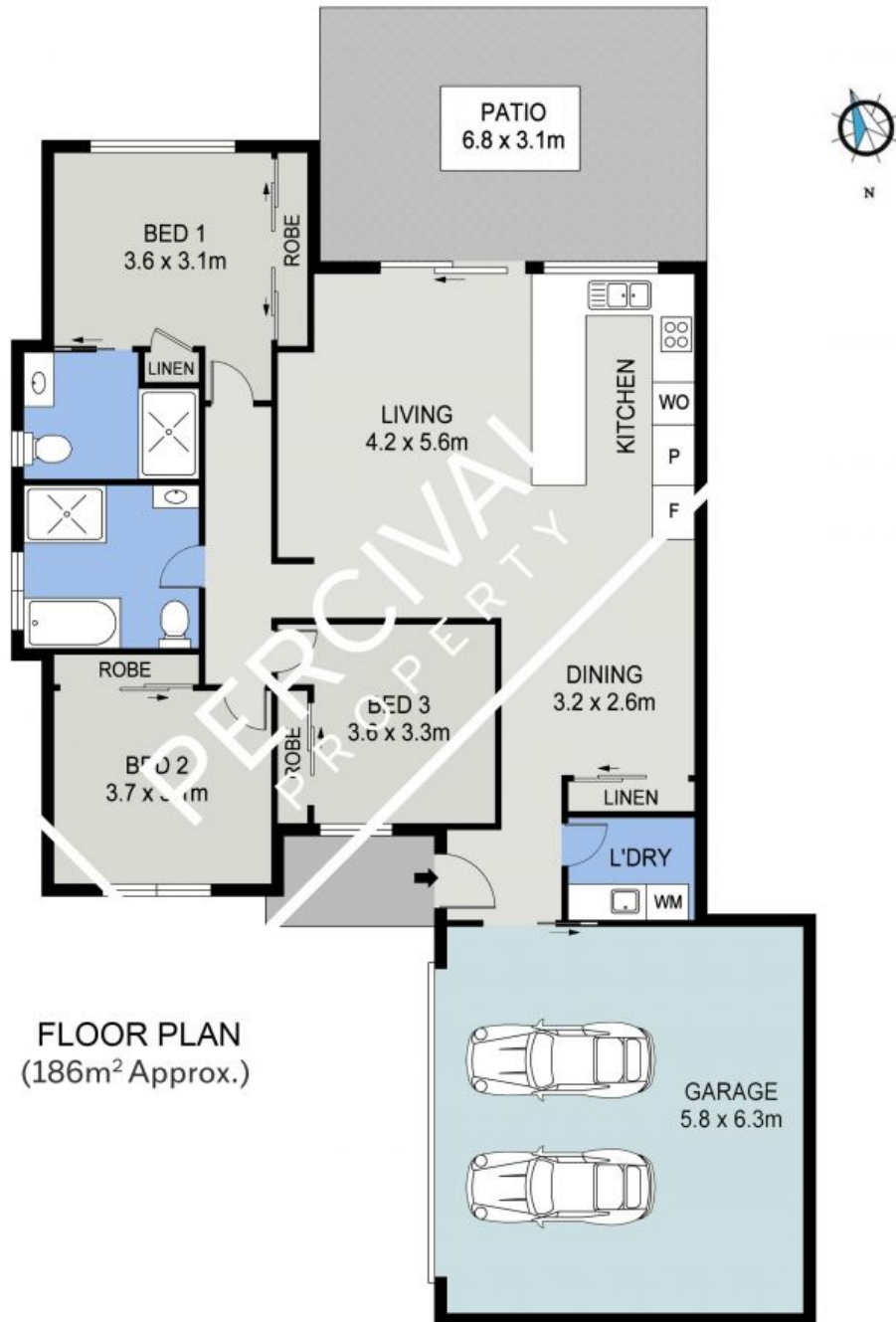
Price: Contact Agent

Council Rates: \$2,230.00/year (approx)



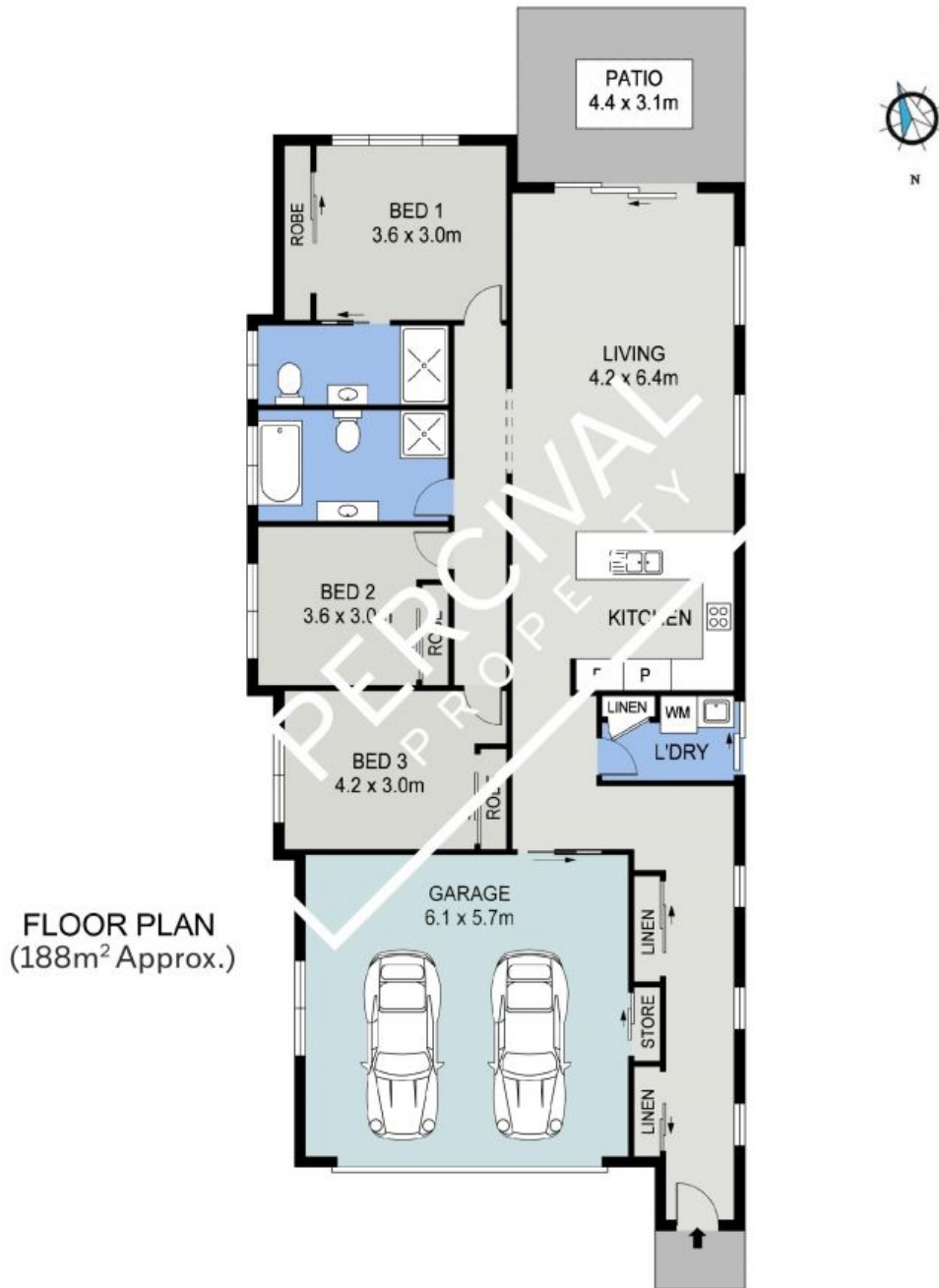
Ayla Bailey

0431 194 876



FLOOR PLAN
(186m² Approx.)

12B LOT 2 GUNSYND HEIGHTS | 3 BED | 2 BATH | 2 CAR



12A LOT 1 GUNSYND HEIGHTS | 3 BED | 2 BATH | 2 CAR