



LOCATION - 145M WALK

PERCIVAL
PROPERTY

TO ATTEND AN OPEN HOUSE/PRIVATE INSPECTION AT THIS PROPERTY YOU WILL BE REQUIRED TO:

- 1 Provide photo identification

- SANITISE**
Sanitise hands before entering
- QUESTIONNAIRE**
Complete the Covid questionnaire
- MASKS**
Masks critical, but recommended
- COLD & FLU SYMPTOMS**
Do not attend, instead, request a virtual inspection
- SOCIAL DISTANCING**
Maintain 1.5m distance between yourself & others



331 Plomer Road North Shore, NSW



3



3



7

Unparalleled for Lifestyle - National Park Outlook & 145m from the Beach

Unique in location, amenity and design, this bespoke home has been crafted as an escape from the everyday.

Curated for the coastal climate and created as a private haven, its allure is a serene and seemingly remote location yet situated only a 15 minute drive from Port Macquarie's CBD.

The open plan lounge, dining, kitchen and the main bedroom directly access a wrap around deck with large covered sections for year round enjoyment.

The generous proportions of a contemporary stone kitchen incorporate an island with breakfast bar, abundant storage including a walk-in pantry, gas cooktop and dishwasher. Stylish...

Price: Auction - Offers Welcome Prior

Council Rates: \$2,870.00/year (approx)

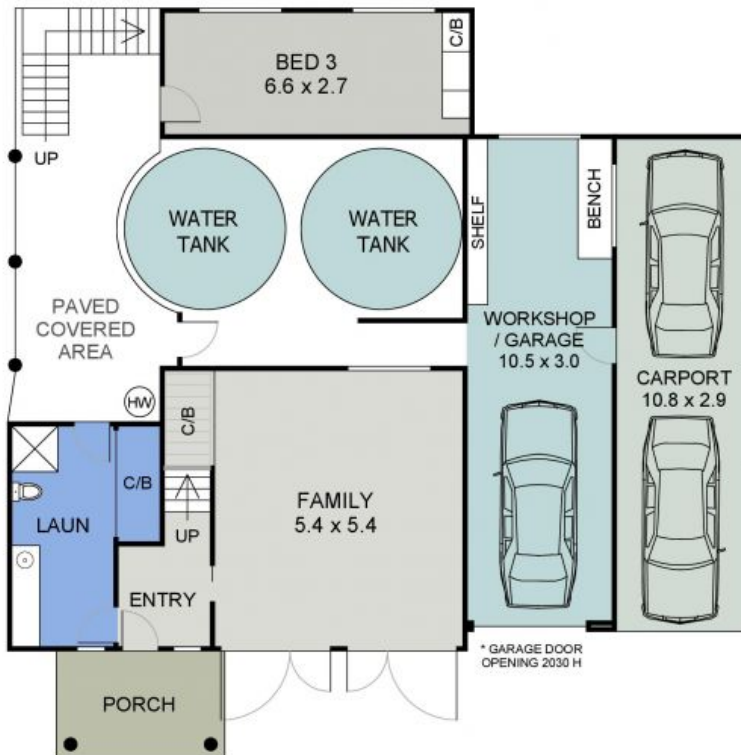


Michelle Percival

0404 466 500

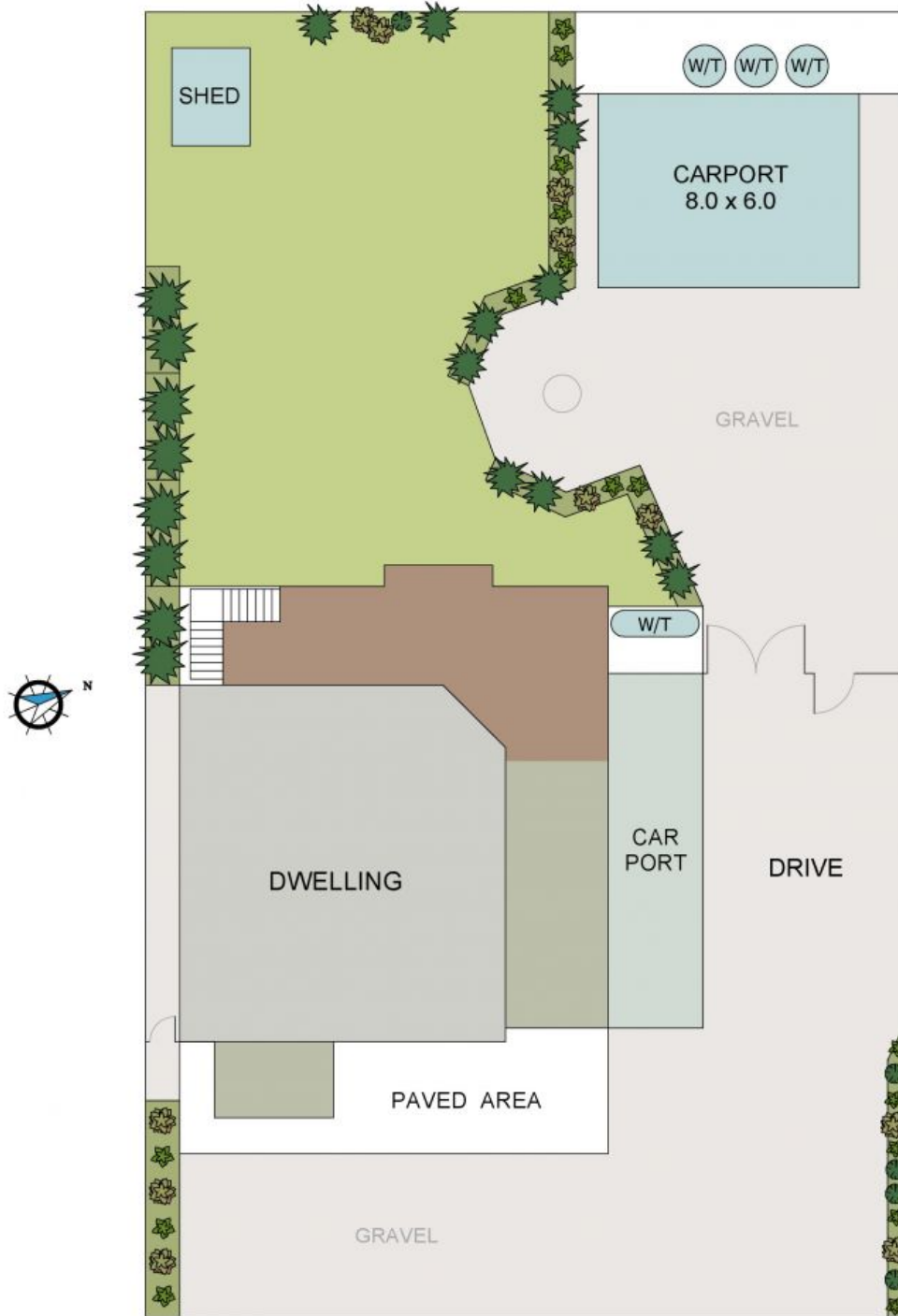
Glenn Scott

0417 019 756



LOWER FLOOR PLAN
(113 sq m Approx)
Scale - 1:125

331 PLOMER ROAD
NORTH SHORE



SITE PLAN
(Land size - 932 sq m)
Scale - 1:165

**331 PLOMER ROAD
NORTH SHORE**