



4 Marsden Crescent Port Macquarie, NSW

4 3 2

Truly Tranquil - Ocean Views & Reserve at Rear

Elevation provides outlook across Port Macquarie to North Shore Beach stretching to Point Plomer, capturing national park and district outlooks.

A character laden home, this property offers an abundance of space ideal for families who desire room to grow and unwind. With its unique ocean views to the front, and treed reserve at the rear, this home provides the perfect blend of natural beauty and contemporary living.

Nestled in a quiet street, it greets you with an inviting charm.

A gated entry creates a sensation of being cocooned from the everyday. Downstairs, you'll discover the warm and inviting ambiance created by the beautiful timber floors. Two living areas provide ample space for relaxation and entertaining, the living room incorporating a modern kitchen featuring a sleek granite benchtop, gas stove, and a dishwasher, making meal preparation a breeze. Whether you're hosting a dinner party or cooking for the family,...

Price: Auction Postponed

Council Rates: \$3,080.00/year (approx)

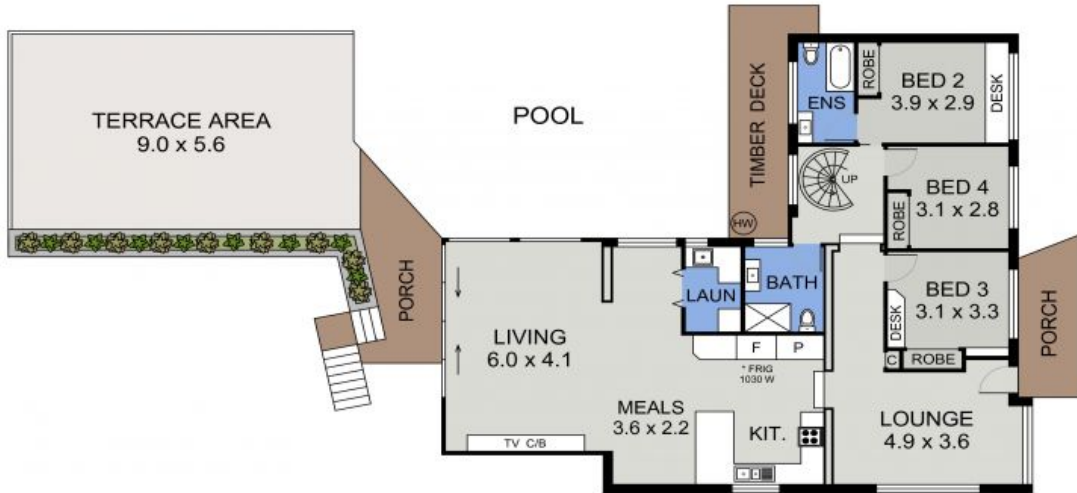


Michelle Percival

0404 466 500

Glenn Scott

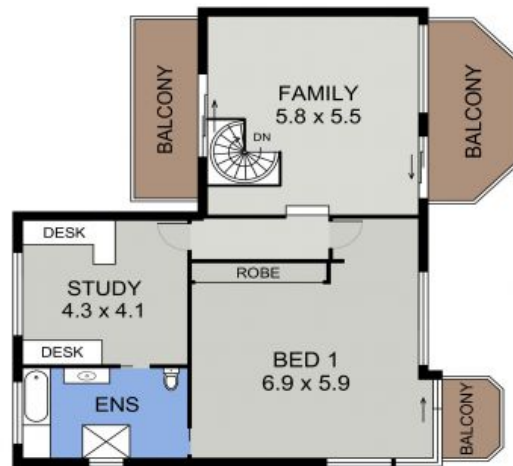
0417 019 756



LOWER FLOOR PLAN
(142 sq m Approx)



**SEPARATE GARAGE
BELOW TERRACE**



UPPER FLOOR PLAN
(116 sq m Approx)
Scale - 1:150

**4 MARSDEN CRESCENT
PORT MACQUARIE**

DISCLAIMER: Plans shown are for marketing purposes only. All dimensions are approximate, and may be subject to error, therefore no liability will be accepted. Interested parties should make their own enquiries.