



1/22 Hilltop Lane Port Macquarie, NSW



3



3



2

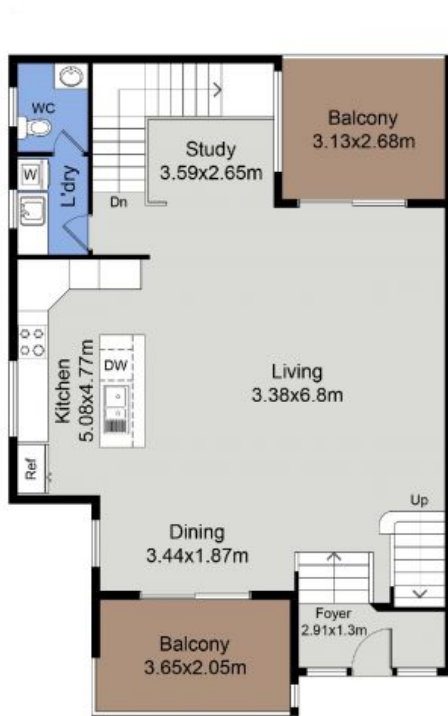
## A Peaceful Retreat in the Very Heart of Town

Within walking distance to everything ? waterfront parks, popular cafes and restaurants, shops and weekend markets at Westport Park or a stroll along the riverfront into the CBD, here you will discover a true hidden gem.

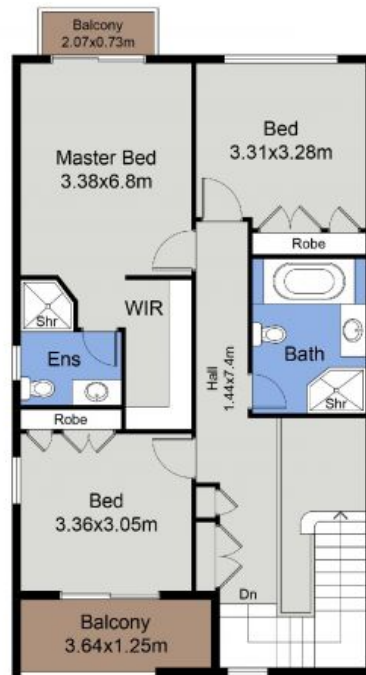
**Price:** \$1090000

**Council Rates:** \$2,500.00/year (approx)

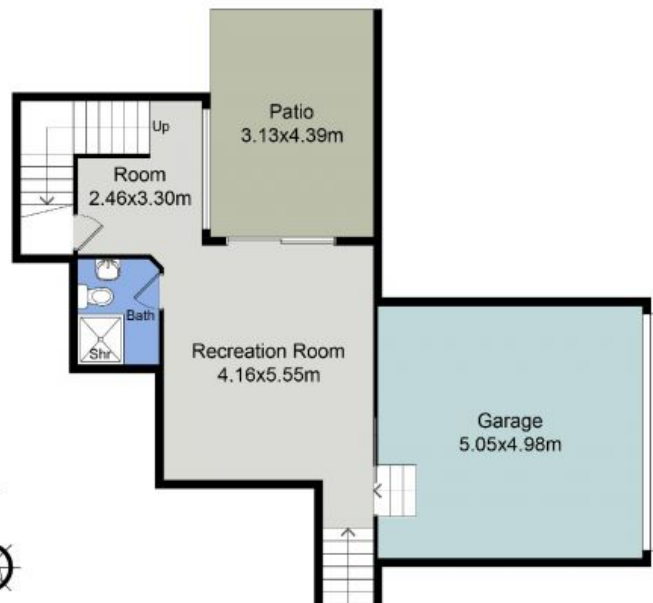
**Strata Rates:** \$1,150.00 p/q



FLOOR 2



FLOOR 3



1/22 HILLTOP LANE  
PORT MACQUARIE

FLOOR 1