



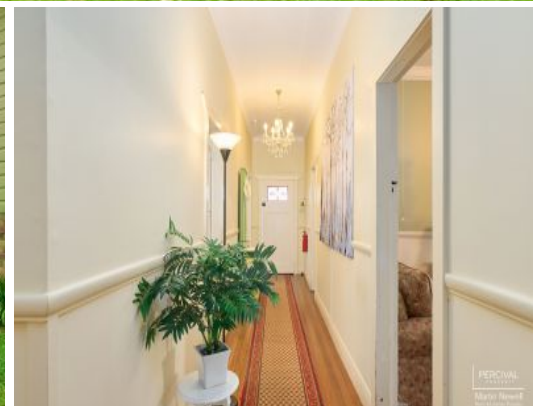
PERCIVAL
PROPERTY
Martin Newell
Real Estate Agent



PERCIVAL
PROPERTY
Martin Newell



PERCIVAL
PROPERTY
Martin Newell



PERCIVAL
PROPERTY
Martin Newell

25 Steinmetz Lane Kendall, NSW

3 2 1

Federation Home in the Heart of the Village (Circa 1939)

In a secluded position with easy access to all the services of Kendall, including Swimming Pool, Tennis Courts, Returned Services Club, General Store, Post Office, Pre-School and Public School, Railway Station (XPT service) and Miss Nellies Caf?.

Kendall is only a short 25-minute drive from Port Macquarie and just 15 minutes from the seaside township of Laurieton.

This is indeed a great example of the federation period, with high ceilings, hardwood floors, hardwood frames, hardwood and mahogany cladding, long hallways and wide verandahs.

Accommodation includes three large bedrooms which are serviced by the homes two bathrooms. There is an option for a fourth bedroom by converting an area currently being used as an ...

Price: Expression of Interest

Council Rates: \$2,650.00/year (approx)



Martin Newell
0429 883 488

Martin Newell
0429 883 488

