



17 Yarramundi Road Port Macquarie, NSW



4



2



2

## Hastings Haven with Parking for Boat or Van - Walk to Beach

This sensational Hastings address places you an easy stroll from Hastings Public School and the local shopping village, and only three minutes by car from beachside cafes, restaurants, medical centre and post office, while Port Macquarie's CBD waterfront and retail precinct are just six minutes from your door.

Designed with relaxed living in mind, two living zones open onto separate outdoor entertaining areas providing year round options for alfresco endeavours.

A tri-level floor plan embraces easy living concepts and incorporates a generous light filled lounge with flow through to a welcoming dining zone. The adjacent streamlined kitchen is appointed with stone bench tops, dishwasher, large pantry and electric cooking appliance...

**Price:** Expression of Interest

**Council Rates:** \$3,120.00/year (approx)

**PERCIVAL**  
PROPERTY

**Michelle Percival**

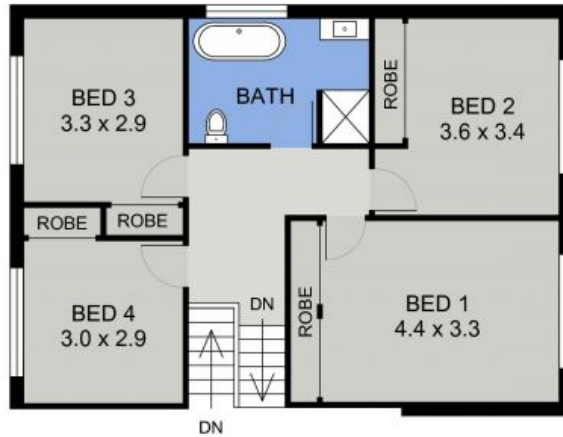
0404 466 500

**Glenn Scott**

0417 019 756



UPPER FLOOR PLAN  
(77 sq m Approx)



LOWER FLOOR PLAN  
(128 sq m Approx)  
Scale - 1:95

17 YARRAMUNDI ROAD  
PORT MACQUARIE

**PERCIVAL**  
PROPERTY

DISCLAIMER: Plans shown are for marketing purposes only. All dimensions are approximate, and may be subject to error, therefore no liability will be accepted. Interested parties should make their own enquiries.