



19 Allunga Avenue Port Macquarie, NSW

 5

 2

 3

A Sanctuary for Effortless Family Living

Set back from the street on a beautifully landscaped 613sqm block this home's elevated north to rear aspect captures a coastal breeze and peaceful views across the tree-lined surroundings of leafy Shelly Beach.

Inviting living spaces bathed in natural light transition seamlessly onto outdoors. A well equipped kitchen with extensive cabinetry is ideally positioned to cater for indoor to outdoor entertaining. Experience the unmatched charm of polished timber floors complemented by a freshly painted interior. Timeless neutral tones emphasise space and create a welcoming ambience.

Family excellence continues with the upper level revealing five oversized bedrooms, including the large master bedroom with ensuite and double built in robes; a fresh white family bathroom and separate w.c. In addition to a roomy walk in linen closet you will find several reverse cycle air conditioning systems and ceiling fans throughout, ensuring year round...

Price: \$1125000

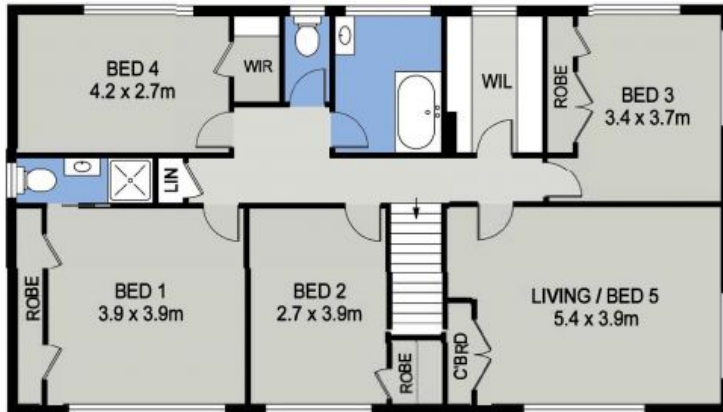
Council Rates: \$3,050.00/year (approx)



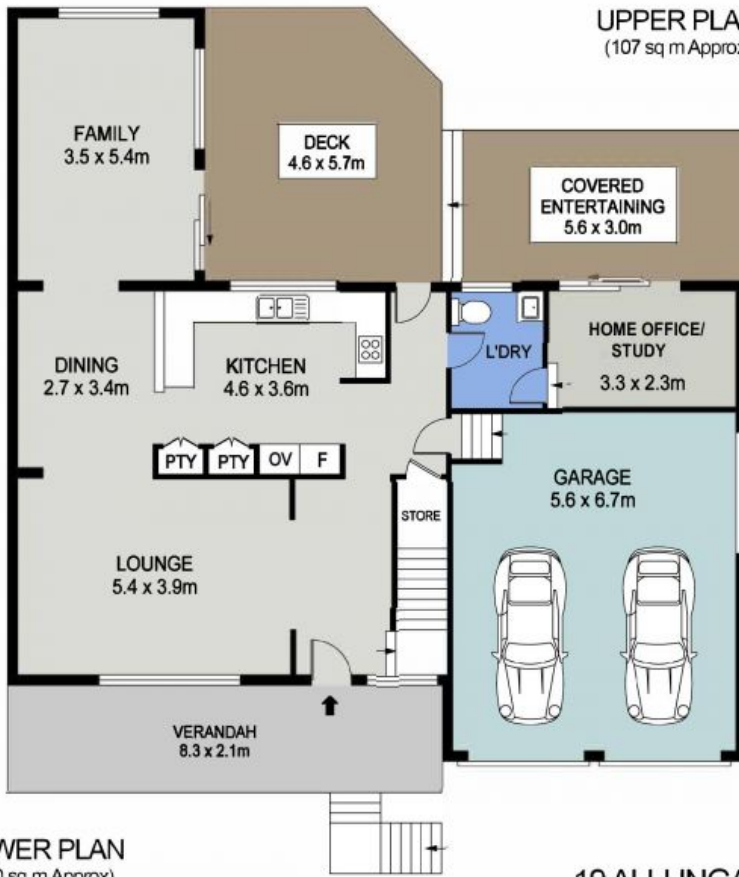
Corrine Cunningham **Tyson Cunningham**

0409 468 773

0481 123 047

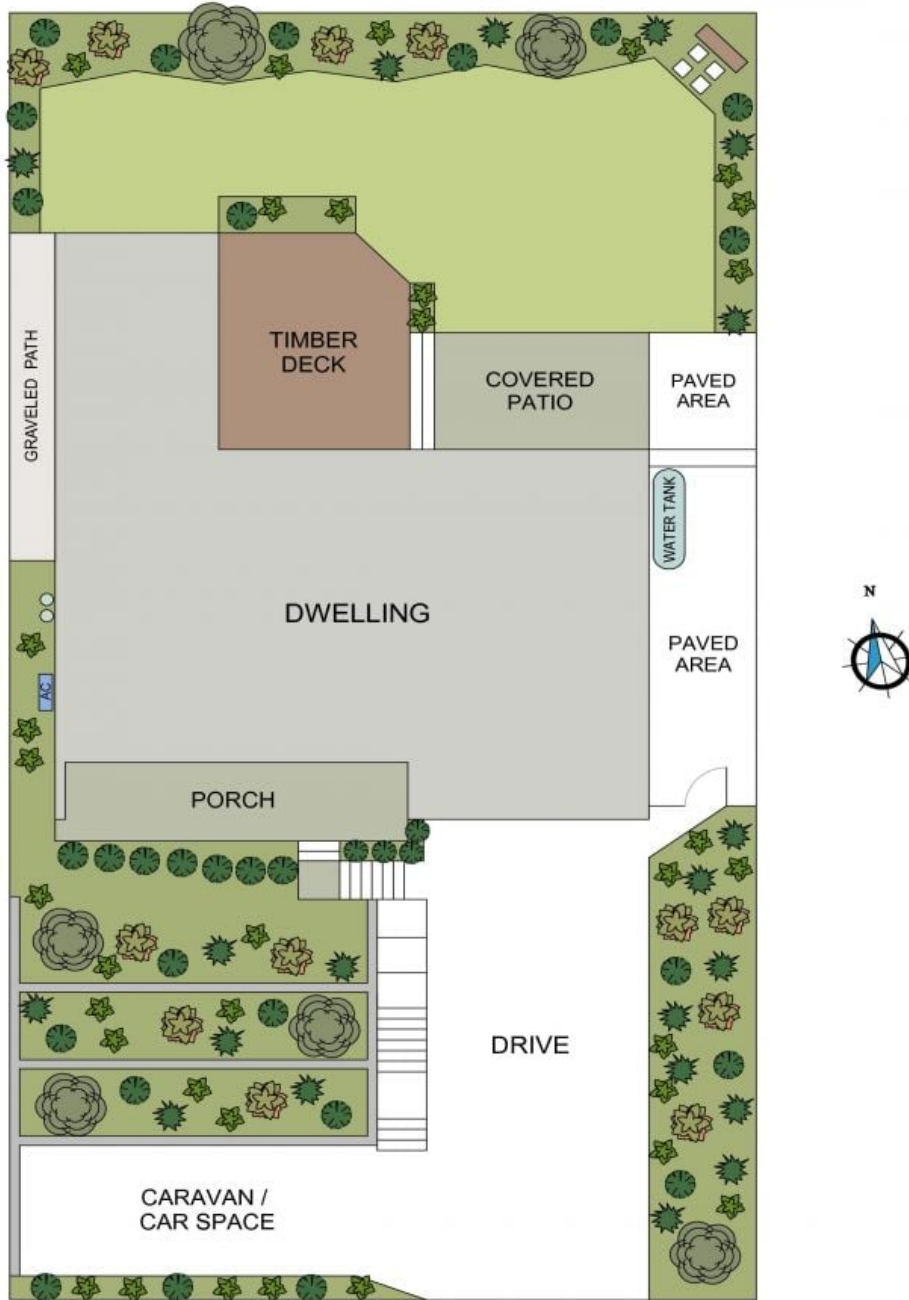


UPPER PLAN
(107 sq m Approx)



LOWER PLAN
(170 sq m Approx)

**19 ALLUNGA AVENUE
PORT MACQUARIE**



SITE PLAN

(Land Size: 613 sq m)

Scale - 1:140

**19 ALLUNGA AVENUE
PORT MACQUARIE**