



BOUNDARIES ARE INDICATIVE ONLY



661 Lorne Road Lorne, NSW

 3  1  2

## Riverfront Rural & Federation Home (12.56ha / 31 acres)

The highly fertile former dairy country boasts improved pastures perfect for both bovines and equines. All six paddocks have excellent water security from the river or the properties dam.

The river frontage of this property is a real feature, with many locations allowing easy access to the picturesque riverbank, where you will discover deep water holes and fast flowing sections under the canopy of a temperate forest.

Improvements to the property include a federation period hardwood / cedar framed homestead with two larger bedrooms and a third bedroom / office. The open plan lounge and dining area adjoins the centrally located kitchen which includes a brick hearth. The federation design includes wide verandahs on two sides and a rear covered entertainment area. This home is perfect for those who would appreciate a federation styled homestead updated with moder...

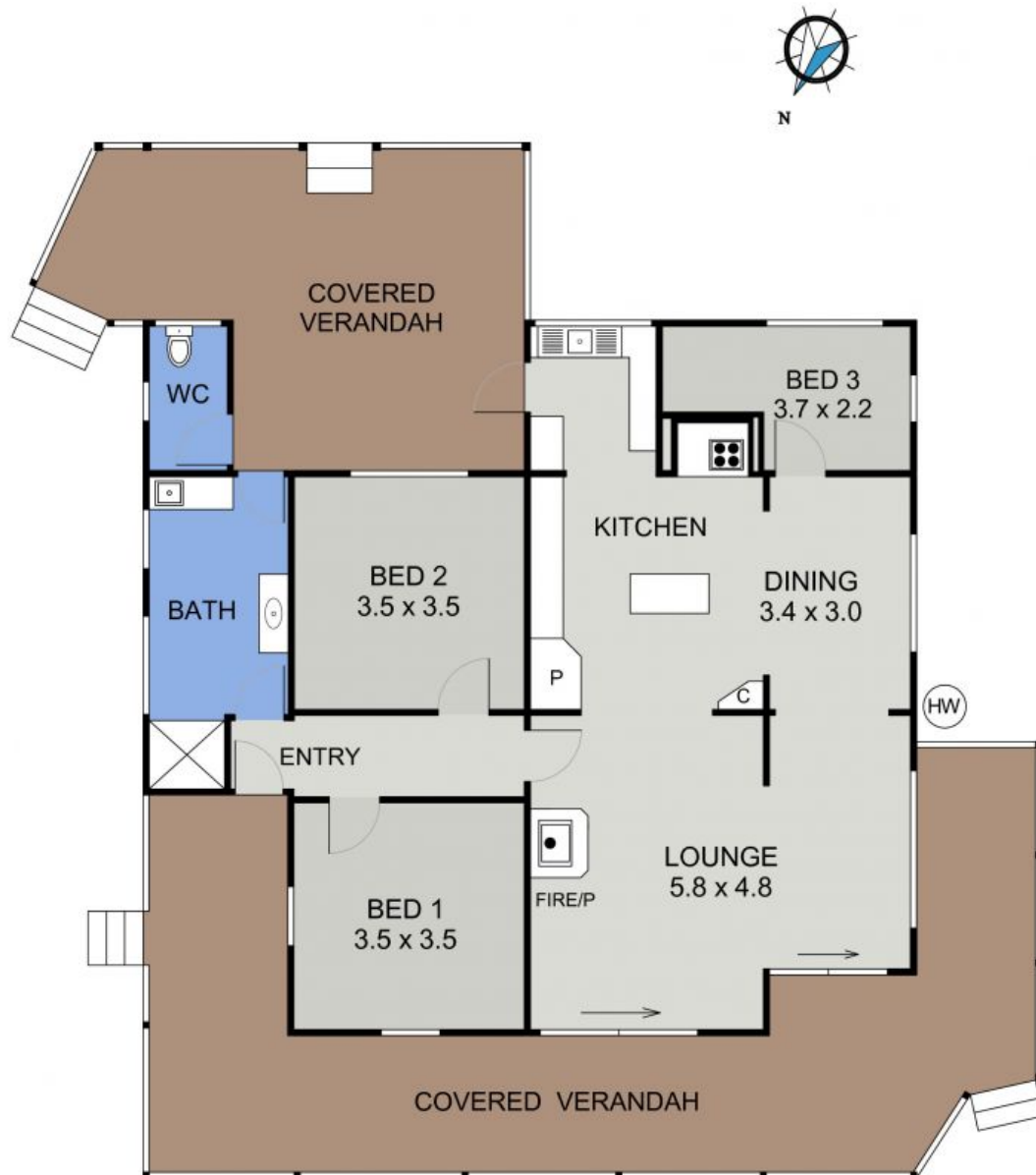
**Price:** Guide \$1,100,000-\$1,200,000

**Council Rates:** \$2,300.00/year (approx)

**PERCIVAL**  
PROPERTY

**Martin Newell**

0429 883 488



**FLOOR PLAN**

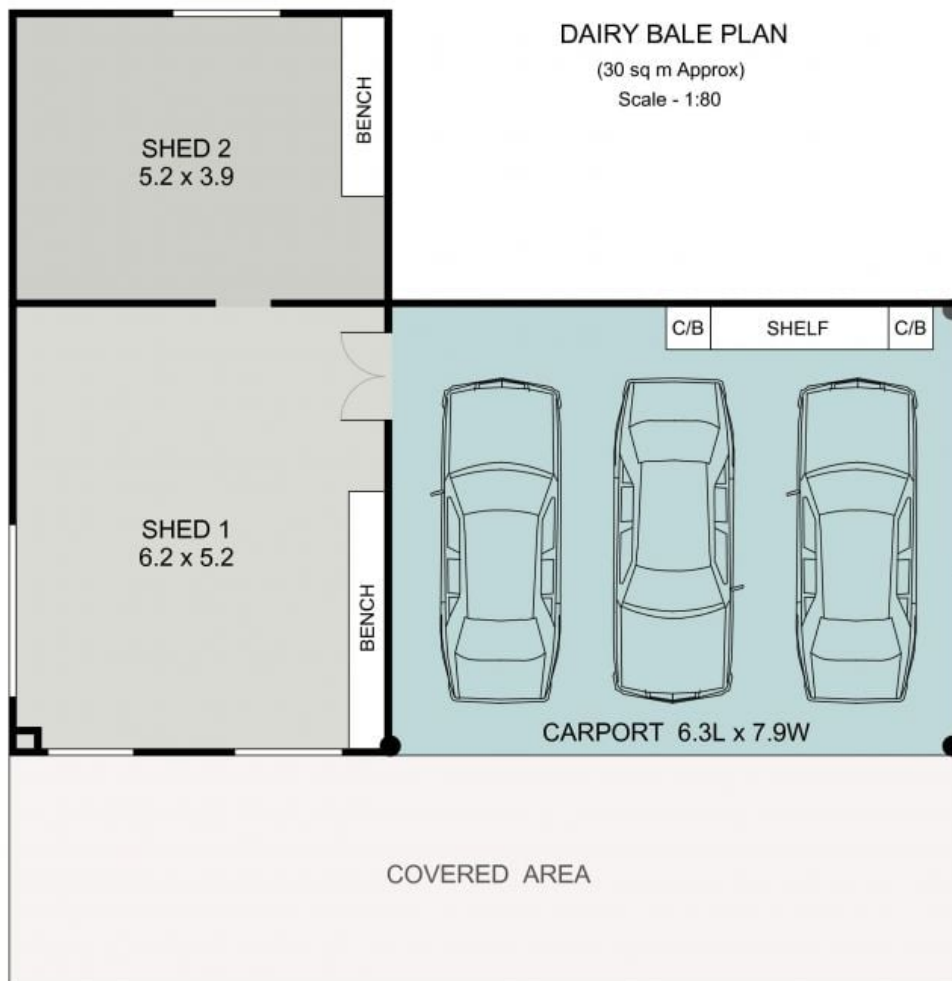
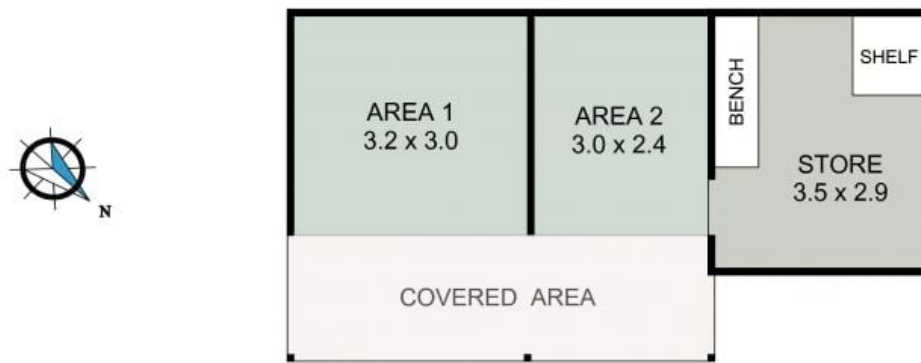
(108 sq m Approx)

Scale - 1:85

**661 LORNE ROAD  
LORNE**

**661 Lorne Road**

**Lorne, NSW**



CARPORT & SHEDS PLAN  
(106 sq m Approx)

661 LORNE ROAD  
LORNE