



8 Stirling Close Thrumster, NSW

5 2 2

Welcome Home to Your Very Own Luxurious Coastal Oasis

Be welcomed by a sunny patio into a galley entry featuring shiplap panelling and Blackbutt hybrid floors that flow throughout. Follow the hallway to discover a private media room. Just a few steps up reveals a spacious open, airy living and dining area that seamlessly flows onto the ultimate alfresco, boasting a stylish built-in kitchen and a chic cafe-style bar.

Price: Guide \$1,750,000-\$1,850,000

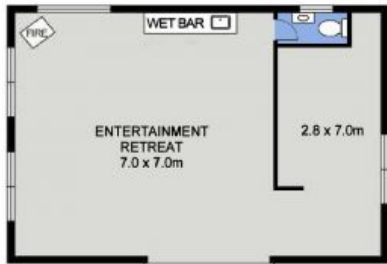
Council Rates: \$2,900.00/year (approx)



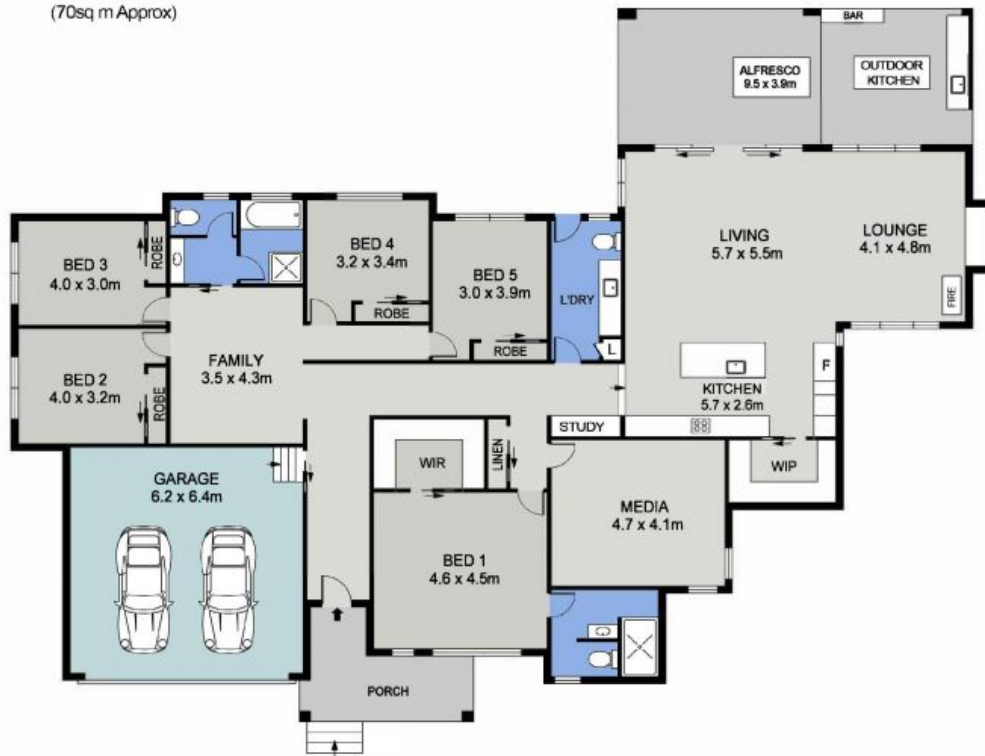
Corrine Cunningham **Tyson Cunningham**

0409 468 773

0481 123 047



RETREAT
(70sq m Approx)



FLOOR PLAN
(327sq m Approx)

**8 STIRLING CLOSE
THRUMSTER**



DISCLAIMER: Plans shown are for marketing purposes only. All dimensions are approximate, and may be subject to error, therefore no liability will be accepted. Interested parties should make their own enquiries.



**8 STIRLING CLOSE
THRUMSTER**



DISCLAIMER: Plans shown are for marketing purposes only. All dimensions are approximate, and may be subject to error, therefore no liability will be accepted. Interested parties should make their own enquiries.